

SPECIFICATIONS

Special Features:

- Reusable seal body made of durable polycarbonate
- Inner electronics are environmentally sealed using TPE (Thermoplastic Elastomer), insuring product longevity
- Seal communicates ID and integrity via ZigBee to GlobalTrak Asset Monitoring Units (AMUs). AMU reports status with location and other sensor data
- Cut or tamper signal transmitted when attempt is made to violate the seal
- Each seal contains unique ID number, electronically hard coded into the seal's data bank
- Tag is completely asleep until strap insertion. Once strap is inserted, the circuit card will wake up and tag can be registered and associated to the AMU

Communications:

- 2.4 GHz ZigBee Wireless
- Ember EM250 chipset
- 250m outside LOS range
- Tx power: up to 5dBm
- Rx sensitivity: -95dBm
- Proprietary Protocol

Environmental:

- Operating Temp: -40°F to +158°F (-20°C to +70°C)
- Humidity: 95% non-condensing at +158°F (+70°C)
- Assembled seal meets/exceeds Mil-Std-108E section 4.10 requirements for 'splash-proof' and 'spray-tight'

Power:

- Non-rechargeable lithium thionyl chloride battery
- Battery has shelf life of 3 years; 12 months minimum transmitting

US Patent No. 6,265,973; 6,407,666 B1
Worldwide Patents Pending

The **Brooks Hyperion Strap eSeal** provides enhanced security capability to the GlobalTrak Asset Monitoring Units. Users have the ability to monitor real-time location and seal status of their assets/containers.

Applications:

The Brooks Hyperion Strap eSeal provides cargo seal status on a variety of assets including intermodal containers, trailers, semi-trailers, and rail cars. Additionally, this seal offers the flexibility to work with other items such as tote-bins, non-standard shape lock hatches, etc.

Compatibility/Expandability:

The Brooks Hyperion Strap eSeal can communicate with any of the GlobalTrak Asset Monitoring Units. Together, real-time location and cargo condition monitoring is provided. The GlobalTrak AMUs include:

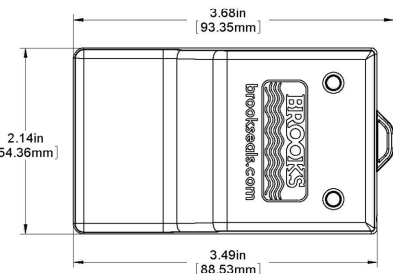
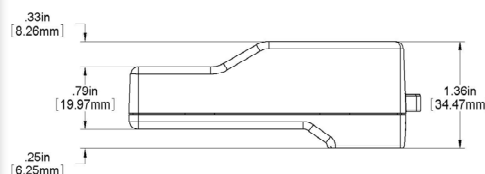
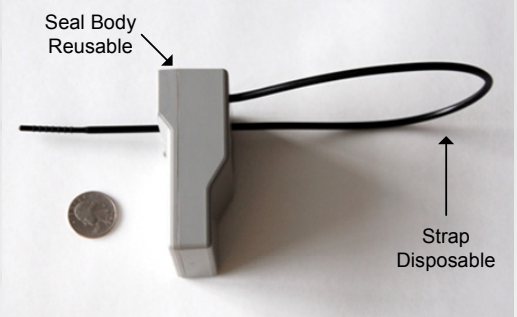
- GlobalTrak+ - GPS plus GSM Cellular, Orbcmm satellite, and ZigBee communications
- GlobalTrak Covert – Assisted GPS plus GSM cellular and ZigBee communications. GlobalTrak Covert allows AMU to be hidden in cargo. Communicates with Remote Sensor Nodes and other ZigBee based devices (EJ Brooks C-TPAT E-seal)

AMUs report to the GlobalTrak Information Management Bureau (IMB) where information is stored, displayed, analyzed, and transmitted to other client systems.

The Brooks Hyperion Strap eSeal (Gen2 RFID version) can be read by a handheld RFID reader (currently integrated with Motorola/Symbol 9090 reader). Additional reader adapter integration available on request)

Design Considerations:

The use of ZigBee for wireless communications allows the Brooks Hyperion Strap eSeal to maintain a long battery life (minimum 180 active days) while providing a long communications range (250 meters outside line of site (LOS)). Additionally, ZigBee allows the use of multiple seals paired with each AMU.



Maximum usable strap length is 13" (330 mm)
 Measurements in US Inches (metric, below)